



119 Newington Causeway, London
SE1

GARTONJONES.COM

119 Newington Causeway, London
, SE1

GARTON JONES.COM

9 Albert
Embankment
London
SE1 7SP

Lettings:
+44 (0) 20 7735 1888
nineelms@gartonjones.com
www.gartonjones.com

£450 Per Week

Discover vibrant urban living in this bright and spacious one-bedroom apartment, spanning 490sq.ft (45.5sq.m), located within the iconic Metro Central Heights development in the heart of Elephant & Castle.

This fantastic property features an inviting open-plan reception room bathed in natural light from its full-height, floor-to-ceiling South-facing windows. The apartment boasts a smart integrated kitchen, a comfortable double bedroom, and wooden flooring throughout. Residents benefit from a dedicated onsite 24-hour concierge service and exclusive access to a resident's leisure suite including a swimming pool and gymnasium.

Positioned directly on the doorstep of Elephant & Castle underground (Northern & Bakerloo lines) and overground stations, the apartment offers unparalleled transport links for very easy access in and out of Central London. The surrounding area has undergone a significant and exciting redevelopment, now offering a dynamic array of amenities including the popular Mercato Metropolitano, diverse independent cafes, restaurants, and bars, as well as new retail spaces and green areas like Elephant Park. This prime location provides the perfect blend of convenience, modern comforts, and a thriving community atmosphere.

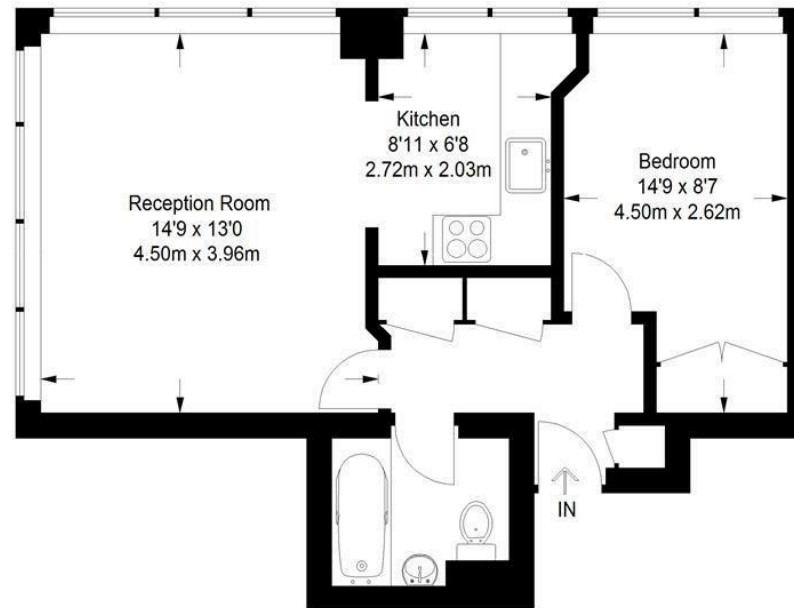
Please note furniture may differ to that shown in the current photos.

- 1 Bedroom
- 490sq.ft (45.5sq.m)
- Open Plan Reception
- Integrated Kitchen
- South Facing
- 24 Hour Concierge
- Residents Gym
- Swimming Pool
- Close to Local Shopping Facilities & Restaurants
- Moments from Elephant & Castle Stations



Metro Central Heights

Approximate Gross Internal Area
490 sq ft / 45.5 sq m



Not to scale, for guidance only and must not be relied upon as a statement of fact.
All measurements and areas are approximate only and have been prepared in
accordance with the current edition of the RICS Code of Measuring Practice.

